



POWERED BY
DELTEC
BATTERIES

Your *Adventure* Awaits



ELiVATE Lithium Batteries

Deep Cycle LiFePO4 Battery

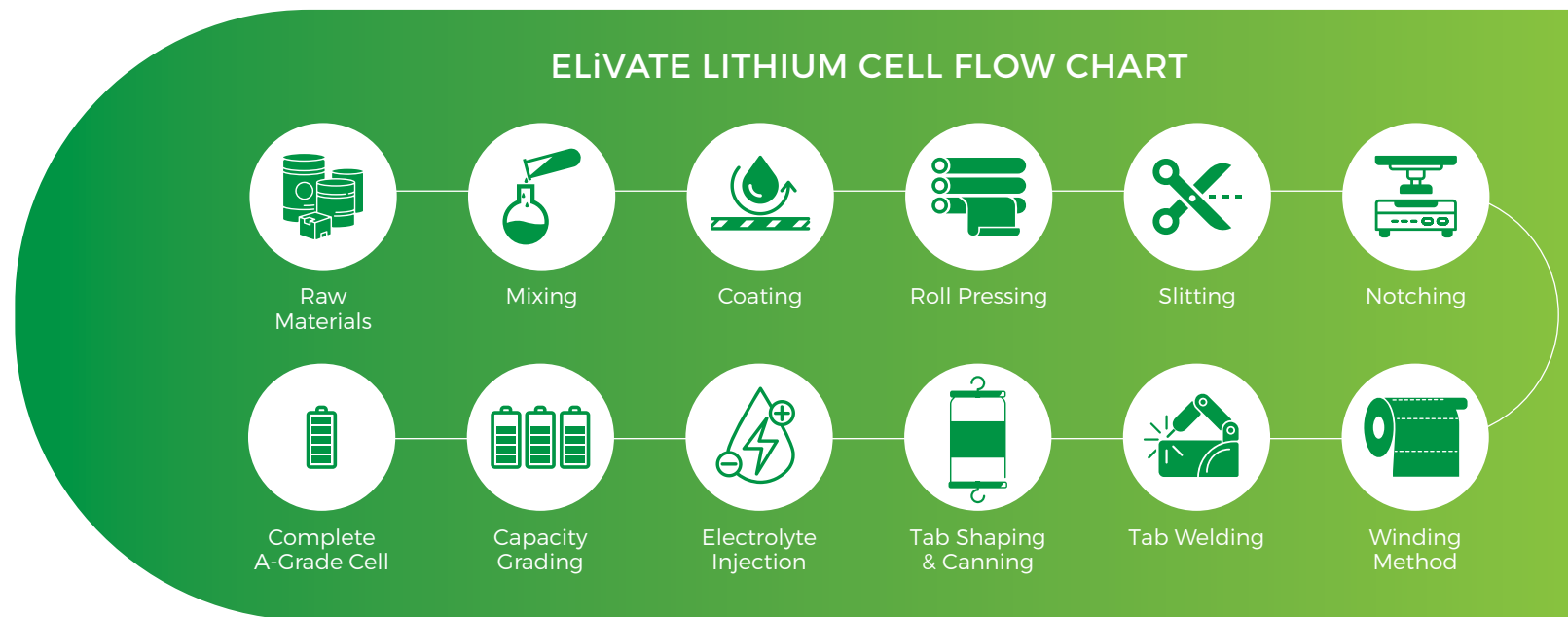
THE ULTIMATE ADVENTURE COMPANION

Built from the ground up with cutting-edge battery technology, ELiVATE Lithium Batteries are a premium power source designed to supercharge your on-road and off-road adventures.

No matter where your travels take you, ELiVATE Lithium Batteries provide the unparalleled performance you need for peace of mind - making every adventure possible.

START TO FINISH

The very best raw materials are sourced to ensure from the ground up, only the best A-grade cells are manufactured. Certified and tested to the highest international standards, with strict quality control during every step of the manufacturing process, they are robust, reliable and ready for the ride. We don't just assemble the battery, we own the process!



Compact Power Supply That Packs a Punch

Whether you're caravanning down the coast or cruising on the open water, ELiVATE Lithium Batteries are packed with premium features to get you where you want to go. Small in scale but big in benefits, they give smart, strong and sustainable a whole new definition.

BENEFITS & FEATURES

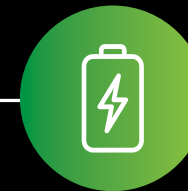
- Longer life with a large number of charge/discharge cycles
- Roughly half the weight of lead-acid equivalent
- Rapid charging for reduced downtime
- Thermal-resistant technology to handle harsh weather conditions
- High energy density to help you go further
- Internal Battery Management System (BMS) to keep cells healthy and balanced
- Bluetooth connectivity for quick and easy insight into your battery status
- Low self-discharge rate ensures a long shelf life
- Environmentally friendly chemistry
- UN38.3, UL1642 + more certified
- 5-year limited warranty
- Industry-leading LiFePO4 A-grade cylindrical cells
- Heavy duty ABS casing



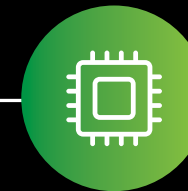
More
Cycles



Longer
Life



Faster
Charging



Internal
BMS



Light
Weight

Smart Energy Storage for **Every Kind of Adventure**

ELiVATE Lithium Batteries are the gold standard for powering outdoor adventures. They are cleverly crafted to power high-end vehicles that are heavily equipped with advanced electronic devices and accessories - helping you travel in comfort all day long.



APPLICATIONS



Caravan



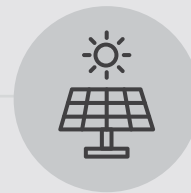
Marine



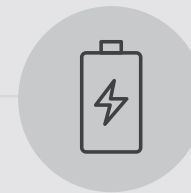
Boating



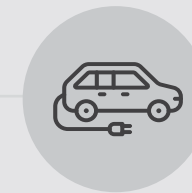
4WD &
Leisure



Solar



Backup
Power



Electric
Vehicles

Looking After your **ELiVATE Lithium Batteries**

ELiVATE Lithium Batteries are made to last, with the right maintenance.

Keep your batteries in prime condition, and avoid any incidents, with these safety dos and don'ts:

DO'S

- Keep the battery upright at all times
- Check polarity before connecting the battery
- Protect the battery from high temperatures
- Store between 0°C - 40°C (optimal temperature 12°C - 25°C)
- Use the correct battery charger and lithium profile

DON'T

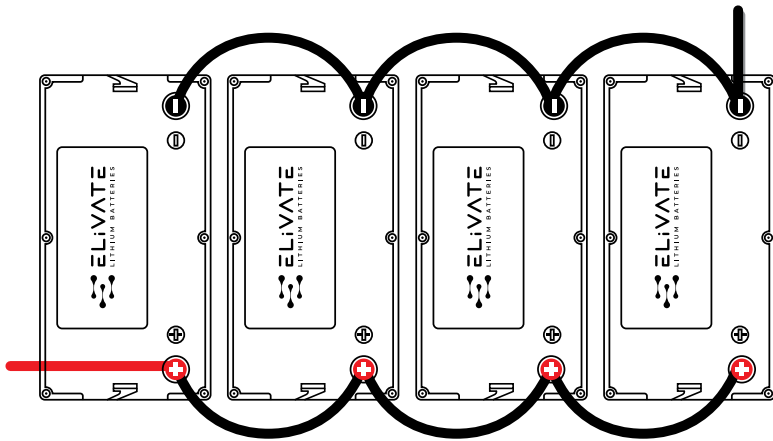
- Connect the battery to high voltage
- Damage, drop or disassemble the battery
- Place the battery in water or fire, or direct sunlight for extended periods
- Short-circuit the battery
- Transport the battery with conductive metal objects
- Place heavy objects on top of the battery
- Allow the battery to remain deeply discharged
- Install or connect the battery with different battery chemistries
- Install the battery under bonnet in the engine bay
- Install in a battery starting application
- Continue to use the battery if there are any unusual odours, warps or leaks



Installation (Wiring)

ELiVATE Lithium Batteries are ready to go when you are.
Slip them into your adventure set-up with the following steps:

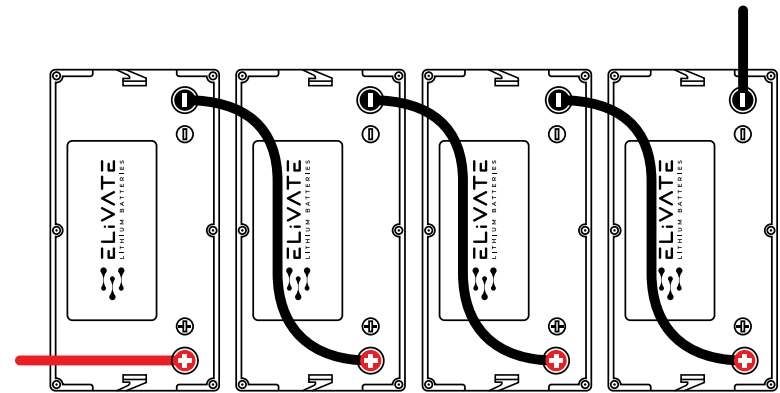
MODULES IN PARALLEL



Parallel connection for increased capacity and total energy.

Connect positive terminals together and negative terminals together.

MODULES IN SERIES



Series connection for increased voltage and total energy.

Connect the negative terminal of one battery to the positive terminal of the next.

Series and parallel connection for increased capacity, voltage and total energy.

Start off with a series connection, by connecting the inner positive and negative terminals of each battery. Then parallel each set together by connecting the outer positives to positives and outer negatives to negatives. Maximum four batteries in series and parallel.

Power Up

ELiVATE Lithium Batteries are designed to recharge fast, so you can spend less time charging and more time adventuring.

CHARGING OPTIMISATION

Make the most of your charging with these measures.

CHARGE

- **Recommended Charge Voltage:** $14.4 \pm 0.15V$
- **Recommended Charge Current:** $\leq 0.5C$
- **Charge Temperature:** $0^{\circ}C - 45^{\circ}C$

DISCHARGE

- **Recommended Current:** $\leq 0.5C$
- **Standard Cutoff Voltage:** 10V
- **Discharge Temperature:** $-20^{\circ}C - 60^{\circ}C$

BMS PROTECTION FEATURES

- Over and under voltage protection
- Current protection
- Over and under temperature protection
- Over charge and discharge protection
- Short-circuit protection



Bluetooth Connectivity

Invaluable Insights at your Fingertips

Tracking your batteries' health is a breeze with the ELIVATE Bluetooth App. No need to access the power system directly for data - just pull up the App on your phone or tablet for all the information you need all in the one place.

Available for free download from the [Apple App Store](#) and [Android Google Play Store](#).

APP FEATURES

- Charge and discharge time remaining
- Capacity and state of charge
- Temperature
- Total voltage
- Number of cycles



About **ELiVATE Lithium Batteries**

ELiVATE Lithium Batteries are dedicated to powering adventures with game-changing batteries built from the ground up. We pride ourselves on high-quality products that are built to last and deliver exceptional performance, every time.

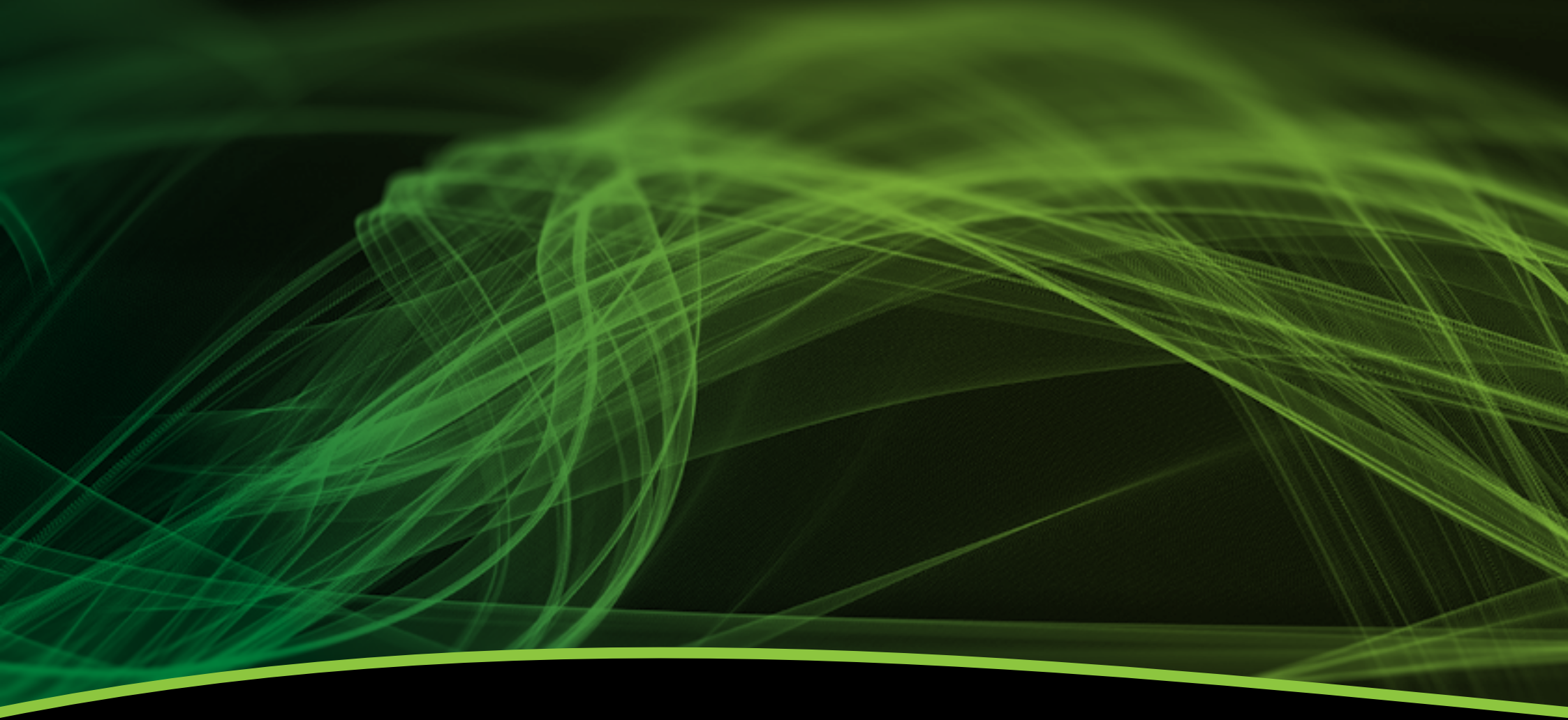
THERE WHEN YOU NEED US

ELiVATE Lithium Batteries have your back, and so do we.

For technical support and warranty information, our friendly, experienced team is only a call or message away.







☎ 1300 335 228

✉ info@deltecbatteries.com.au

🔗 deltecbatteries.com.au

